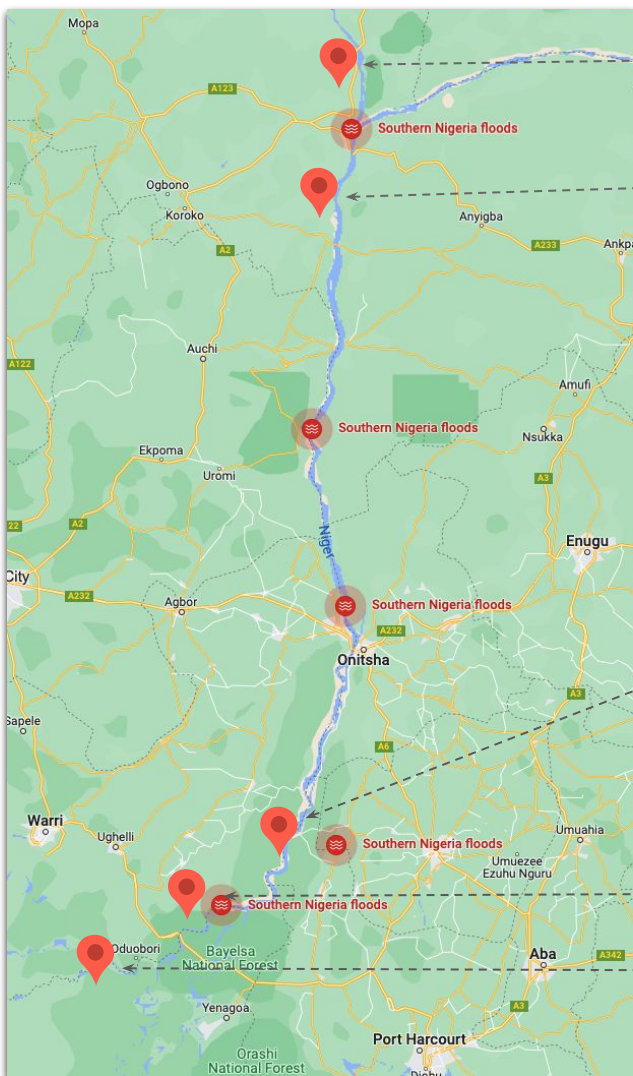




Documenting Nigeria’s Flood Disaster

Tracking Global Events | October 13, 2022

In 27 of Nigeria’s 36 states, communities along the Niger and Benue rivers are currently faced with massive flooding. Although some parts of the country experience flooding annually, heavy rainfall and spillage from the Lagdo Dam in northern Cameroon has contributed to the intensity of the current situation, which has left more than 1.4 million people displaced since late September. To better understand the impact on Nigerians, Premise collected observational data from Contributors across 9 Nigerian states. We received 86 submissions, including 23 validated images, in 3 days.



Lokoja, Kwara State
(7.838930, 6.747980)



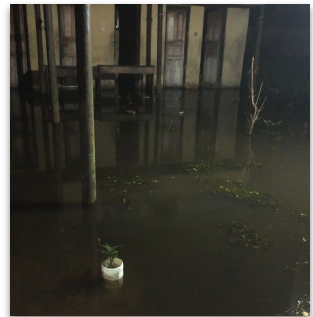
Ajaokuta, Kwara State
(7.838930, 6.747980)



Ogba-Egbema, Rivers State
(5.553790, 6.585510 / 5.323360, 6.652480)



Isoko South, Delta State
(5.452100, 6.213970)



Ekeremor, Bayelsa State
(5.056750, 5.772630)

Premise in Action

Premise offers a unique ability to quickly source information from real people on the ground in hard-to-reach places. Over five million people in 138 countries are using the Premise app on their smartphones, enabling our customers to monitor a situation over time and employ a data-driven approach to timely decision-making. To learn more about Premise, watch our tech demo or get in touch with us.