



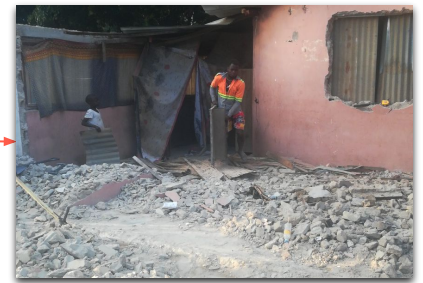
Cyclone Freddy rips through Mozambique

Tracking Global Events | March 20th, 2023

[Record breaking Cyclone Freddy](#) hit the southern African coast first in early February and again about a month later, destroying many homes in Mozambique, Malawi, and Madagascar, and leaving hundreds dead. To better understand its impact in Mozambique, Premise collected both observational and sentimental data from Contributors in all 11 provinces. Using a method of convenience sampling, we received 589 survey responses and 59 validated images.



Dondo, Sofala
(-19.83231, 34.85481)



Nampula, Nampula
(-15.10777, 39.25827)



Maputo, Maputo City
(-25.96008, 32.56115)

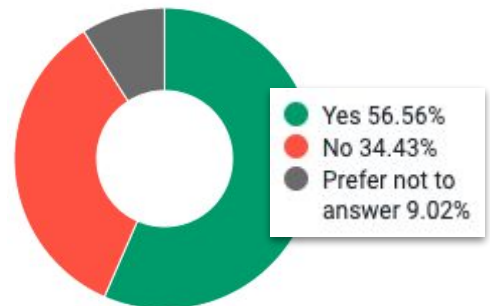


Marracuene, Maputo
(-25.74313, 32.63076)

In what way(s) have you been affected by Cyclone Freddy?
[Select all that apply]

Impact of the cyclone	% of total respondents that selected this
My home was damaged	42%
Other valuable property of mine was damaged	32%
Other	24%
Someone I care about is missing	19%
I have lost a loved one	15%
I have been injured	8%

[If home was damaged]
Do you have somewhere safe and welcoming to stay at temporarily?



Premise in Action

Premise offers a unique ability to quickly source information from real people on the ground in hard-to-reach places. Over five million people in 138 countries are using the Premise app on their smartphones, enabling our customers to monitor a situation over time and employ a data-driven approach to timely decision-making. [Visit our website](#) to learn more about Premise.